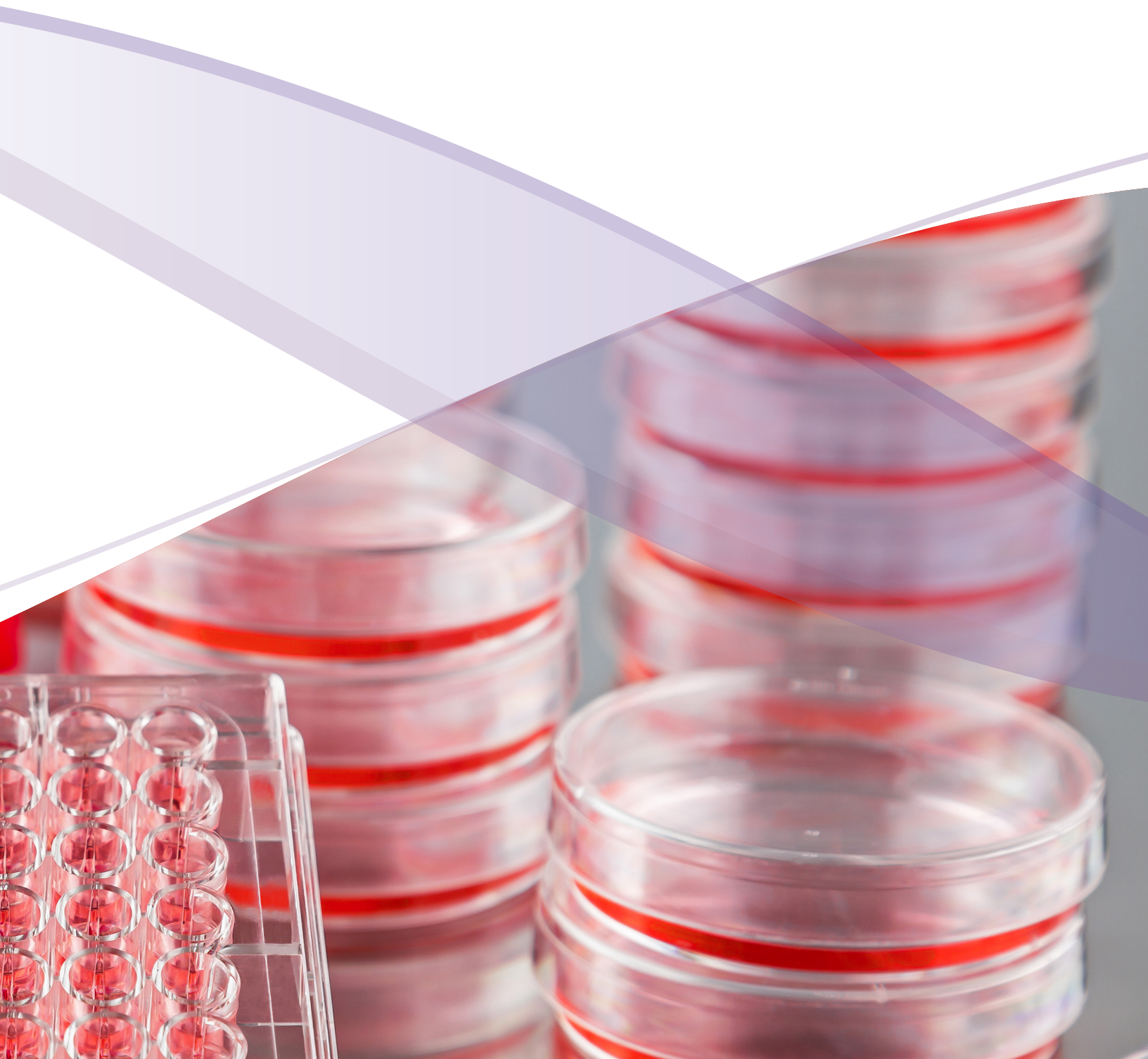




High Performance Media, Sera, and Reagents



ATCC® HIGH-PERFORMANCE MEDIA, SERA, AND REAGENTS

ATCC MEDIA, SERA, AND REAGENTS ARE TAILORED TO EXACT SPECIFICATIONS – DISCOVER THE DIFFERENCE

Using ATCC high-performance media, sera, and reagents will ensure robust, continuous cell growth, consistent performance, and minimum cell loss when reviving cells from cryopreservation. These high-performance products are used during the recovery, expansion, cryopreservation, and distribution of ATCC cell lines, virtually guaranteeing successful cell culture every time you thaw a frozen vial of cells.

Tested and optimized, ATCC high-performance media and sera are then used to produce and distribute our more than 4,000 different cell lines. These reagents are made available to the research community only through ATCC.

Cells lines are ensured with a 30-day warranty when cultured with ATCC media and serum.

ATCC HIGH-PERFORMANCE MEDIA CLASSIC FORMULATIONS

Formulations for each of the classical medium types are available on product pages on ATCC's website.

“ATCC is a center with professional culture. Huge and exclusive range of products, with great quality and service is of top quality. I highly recommend ATCC to everyone.”

Vandana Singh
Research Scientist/Staff Scientist
Prodigy Biotech



Table 1: ATCC media

| ATCC® No. | Product Name | Volume |
|--------------------------|--|-------------|
| 30-2001™ | RPMI-1640 Medium | 500 mL |
| 30-2002™ | Dulbecco's Modified Eagle's Medium (DMEM) | 500 mL |
| 30-2003™ | Eagle's Minimum Essential Medium (EMEM) | 500 mL |
| 30-2004™ | F12K Medium | 500 mL |
| 30-2005™ | Iscove's Modified Dulbecco's Medium (IMDM) | 500 mL |
| 30-2006™ | DMEM:F12 Medium (1:1 Ratio) | 500 mL |
| 30-2007™ | McCoy's 5A Medium, Modified | 500 mL |
| 30-2011™ | McCoy's 5A Medium, Modified, ABP-Free | 500 mL |
| 30-2008™ | Leibovitz's L-15 Medium | 500 mL |
| 46-X™ | Hybri-Care Medium, Powder | Prepares 1L |

Table 2: ATCC cell culture media are coming soon as 6 packs – Order in bulk to receive additional discounts!

| ATCC® No. | Product Name | Volume |
|------------------------------|---|------------|
| 30-2001-6PK™ | RPMI-1640 Medium – 6 Pack | 6 X 500 mL |
| 30-2002-6PK™ | Dulbecco's Modified Eagle's Medium (DMEM) – 6 Pack | 6 X 500 mL |
| 30-2003-6PK™ | Eagle's Minimum Essential Medium (EMEM) – 6 Pack | 6 X 500 mL |
| 30-2004-6PK™ | F12K Medium – 6 Pack | 6 X 500 mL |
| 30-2005-6PK™ | Iscove's Modified Dulbecco's Medium (IMDM) – 6 Pack | 6 X 500 mL |
| 30-2006-6PK™ | DMEM:F12 Medium (1:1 Ratio) – 6 Pack | 6 X 500 mL |
| 30-2007-6PK™ | McCoy's 5A Medium, Modified – 6 Pack | 6 X 500 mL |
| 30-2008-6PK™ | Leibovitz's L-15 Medium – 6 Pack | 6 X 500 mL |

ATCC® HIGH-PERFORMANCE SERA

ATCC® SERA RESULT IN THE MOST RELIABLE CELL GROWTH – EXPERIENCE THE DIFFERENCE

ATCC high-performance animal sera come from USDA-approved origins. Experienced technicians thoroughly test the packaged sera to eliminate contamination concerns. All ATCC sera are prequalified on multiple cell lines to ensure robust growth using both sequential subcultures and plating efficiencies.

Each lot of ATCC high-performance sera is subjected to comprehensive tests for sterility and performance, including:

- Sterility tests performed on each lot using current USP methods for bacterial and fungal contamination.
- Comprehensive viral testing adhering to 9 CFR 113.53 guidelines.
- *Mycoplasma* testing performed via direct culture and Hoechst DNA staining.
- Limulus Amoebocyte Lysate (LAL) assay used to measure Endotoxin values.

All tests are performed post-packaging to guarantee the highest quality, best performing sera.

“After a couple of failed attempts to grow ZF-4 cells in medium supplemented with serum from other manufacturers, I switched to ATCC Fetal Bovine Serum (ATCC® 30-2020™). Using this serum, I obtained good recovery, viability, and robust growth.”

Dr. Annette Schenck
Max Planck Institute of Molecular
Cell Biology and Genetics
Dresden, Germany



Table 3: Animal sera

| ATCC® No. | Product Name | Volume |
|-----------------------|----------------------------------|--------|
| <u>30-2020™</u> | Fetal Bovine Serum | 500 mL |
| <u>30-2021™</u> | Fetal Bovine Serum | 100 mL |
| <u>30-2030™</u> | Calf Bovine Serum | 500 mL |
| <u>30-2031™</u> | Calf Bovine Serum | 100 mL |
| <u>SCRR-30-2020™*</u> | Fetal Bovine Serum, ES Qualified | 500 mL |
| <u>30-2025™**</u> | Fetal Bovine Serum, EU Approved | 500 mL |
| <u>30-2026™**</u> | Fetal Bovine Serum, EU Approved | 100 mL |

* Qualified with Human Mesenchymal Stem Cells

** Only for sale to EU customers

ATCC® CELL CULTURE REAGENTS

ATCC-TESTED MEDIA SUPPLEMENTS AND SUBCULTURE REAGENTS – ADDITIONAL TOOLS FOR YOUR SUCCESS

Media supplements, antibiotics, and reagents from ATCC allow you to customize the growth, maintenance, and expansion of your cells. Backed by the same commitment to quality, each supplement, antibiotic, and reagent from ATCC is tested for sterility and efficacy.

Table 4: Buffers

| ATCC® No. | Product Name | Volume |
|-----------|--|--------|
| 30-2200™ | Dulbecco's Phosphate Buffered Saline (DPBS)* | 500 mL |
| 30-2213™ | Hank's Balanced Salt Solution (HBSS)* | 500 mL |

Table 5: Cell dissociation reagents

| ATCC® No. | Product Name | Volume |
|--------------|--|--------|
| 30-2101™ | 0.25% Trypsin/0.53 mM EDTA Solution | 100 mL |
| 30-2103™ | Non-Enzymatic Cell Dissociation Solution | 100 mL |
| 30-2104™ | Soybean Trypsin Inhibitor | 20 mL |
| PCS-999-003™ | Trypsin-EDTA for Primary Cells* | 100 mL |
| PCS-999-004™ | Trypsin Neutralizing Solution | 100 mL |
| Coming Soon | Xeno-Free Trypsin Inhibitor | 100 mL |

Table 6: Cryopreservation solutions

| ATCC® No. | Product Name | Volume |
|-----------|--|----------|
| 4-X™ | Dimethylsulfoxide (DMSO) | 5 x 5 mL |
| 30-2600™ | Serum-Free Cell Freezing Medium | 20 mL |
| ACS-6000™ | CoolCell® LX Alcohol-Free Cryopreservation Container | EA |

Table 7: Antibiotics and reagents

| ATCC® No. | Product Name | Volume |
|--------------|---|--------|
| 30-2300™ | Penicillin-Streptomycin Solution | 100 mL |
| PCS-999-002™ | Penicillin-Streptomycin-Amphotericin B Solution | 1.0 mL |
| 30-2214™ | L-Glutamine Solution | 100 mL |
| PCS-999-027™ | 0.1% Gelatin Solution | 100 mL |
| PCS-999-001™ | Phenol Red | 1.0 mL |

* Formulations available online.

“ATCC products are reliable and of high quality. The shipping is quick.”

Ya Wang
Postdoctoral Fellow
Harvard University



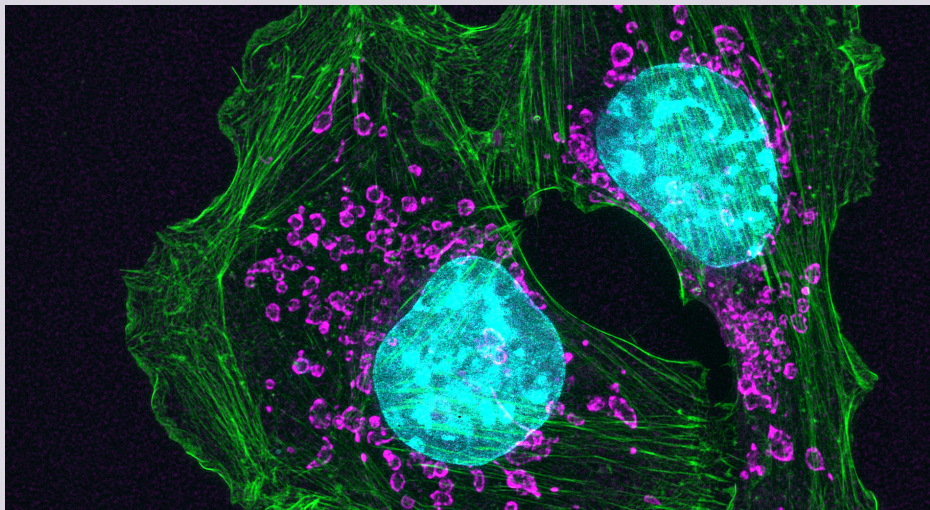
ATCC® CELL AUTHENTICATION SERVICES

Research results are only valid and reproducible when the cell cultures and materials used in experiments are accurately identified and uncontaminated. ATCC offers scientists a range of high-quality cell authentication testing services backed by nearly a century of experience in biomaterial management and authentication standards.

ATCC can help you find the solutions that best meet your needs—explore our cell authentication offerings and let us help you guarantee the integrity of your research.

“The high standards of authentication, preservation, and distribution are key reasons we’ve chose to partner with ATCC to preserve and distribute rare cancer cell lines.”

Dr. Barbara Van Hare
Director of Foundation Partnerships
The Rare Cancer Research Foundation



HUMAN CELL STR PROFILING

STR markers—tiny repeating segments of DNA between genes—at specific loci establish a DNA fingerprint for every human cell line.

MOUSE CELL STR PROFILING

Our mouse STR assay validates the authenticity of mouse cell lines and detects contamination by human and African green monkey DNA.


MYCOPLASMA TESTING SERVICE

Check your cells for contamination with the PCR-based mycoplasma testing service. Our assay can identify over 60 species of mycoplasma and can deliver results in 3-5 business days.


Table 8: Authentication services


| ATCC® No. | Product Name | Unit |
|----------------------------|---|---------|
| 135-XV™ | FTA Sample Collection Kit for Human Cell Authentication Service | 1 Kit |
| 135-XV-10™ | FTA Sample Collection Kit for Human Cell Authentication Service | 10 Kits |
| 135-XV-20™ | FTA Sample Collection Kit for Human Cell Authentication Service | 20 Kits |
| 137-XV™ | FTA Sample Collection Kit for Mouse Cell Authentication Service | 1 Kit |
| 136-XV™ | PCR-based <i>Mycoplasma</i> Testing Service | 1 Kit |






10801 University Boulevard
Manassas, Virginia 20110-2209

 703.365.2700

 703.365.2701

 sales@atcc.org

 www.atcc.org

CB-022024-v03

©2024 American Type Culture Collection. The ATCC trademark and trade name, and any other trademarks listed in this publication are trademarks owned by the American Type Culture Collection unless indicated otherwise.

These products are for laboratory use only. Not for human or diagnostic use. ATCC products may not be resold, modified for resale, used to provide commercial services or to manufacture commercial products without prior ATCC written approval.

